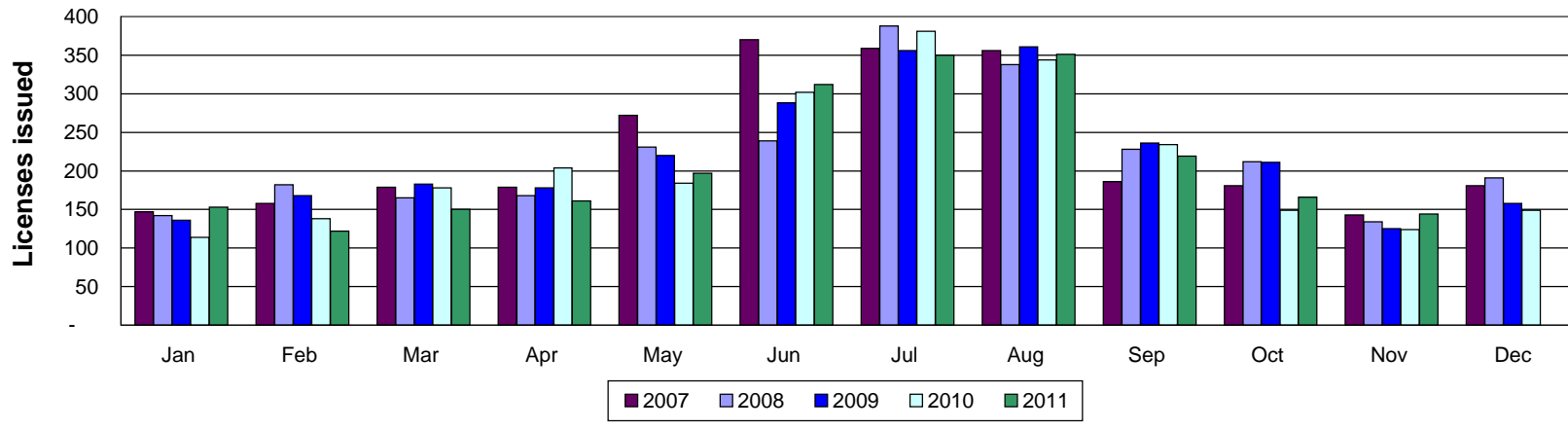


### Marriage Licenses Applications Only



# of Licenses Recorded	Jan	Feb	Mar	Apr	May	Jun	Jul	Aug	Sep	Oct	Nov	Dec	TOTAL
2011	153	122	150	161	197	312	350	351	219	166	144	149	2,325
2010	114	138	178	204	184	302	381	344	234	149	124	149	2,501
2009	136	168	183	178	220	288	356	361	236	211	125	158	2,620
2008	142	182	165	168	231	239	388	338	228	212	134	191	2,618
2007	147	158	179	179	272	370	359	356	186	181	143	181	2,711

# of Licenses Recorded Year-to-Date	Jan	Feb	Mar	Apr	May	Jun	Jul	Aug	Sep	Oct	Nov	Dec
2011	153	275	425	586	783	1,095	1,445	1,796	2,015	2,181	2,325	
2010	114	252	430	634	818	1,120	1,501	1,845	2,079	2,228	2,352	2,501
2009	136	304	487	665	885	1,173	1,529	1,890	2,126	2,337	2,462	2,620
2008	142	324	489	657	888	1,127	1,515	1,853	2,081	2,293	2,427	2,618
2007	147	305	484	663	935	1,305	1,664	2,020	2,206	2,387	2,530	2,711

% Change From Prior Month	Jan	Feb	Mar	Apr	May	Jun	Jul	Aug	Sep	Oct	Nov	Dec
2011	3%	-20%	23%	7%	22%	58%	12%	0%	-38%	-24%	-13%	
2010	-28%	21%	29%	15%	-10%	64%	26%	-10%	-32%	-36%	-17%	20%
2009	-29%	24%	9%	-3%	24%	31%	24%	1%	-35%	-11%	-41%	26%
2008	-22%	28%	-9%	2%	38%	3%	62%	-13%	-33%	-7%	-37%	43%
2007	-10%	7%	13%	0%	52%	36%	-3%	-1%	-48%	-3%	-21%	27%

% Change From Prior Year Month	Jan	Feb	Mar	Apr	May	Jun	Jul	Aug	Sep	Oct	Nov	Dec
2011	34%	-12%	-16%	-21%	7%	3%	-8%	2%	-6%	11%	16%	
2010	-16%	-18%	-3%	15%	-16%	5%	7%	-5%	-1%	-29%	-1%	-6%
2009	-4%	-8%	11%	6%	-5%	21%	-8%	7%	4%	0%	-7%	-17%
2008	-3%	15%	-8%	-6%	-15%	-35%	8%	-5%	23%	17%	-6%	6%
2007	1%	0%	-2%	-1%	19%	20%	0%	-3%	-13%	6%	-3%	10%

% Change From Prior Year-to-Date	Jan	Feb	Mar	Apr	May	Jun	Jul	Aug	Sep	Oct	Nov	Dec
2011	34%	9%	-1%	-8%	-4%	-2%	-4%	-3%	-3%	-2%	-1%	
2010	-16%	-17%	-12%	-5%	-8%	-5%	-2%	-2%	-2%	-5%	-4%	-5%
2009	-4%	-6%	0%	1%	0%	4%	1%	2%	2%	2%	1%	0%
2008	-3%	6%	1%	-1%	-5%	-14%	-9%	-8%	-6%	-4%	-4%	-3%
2007	1%	0%	-1%	-1%	4%	8%	6%	5%	3%	3%	3%	3%