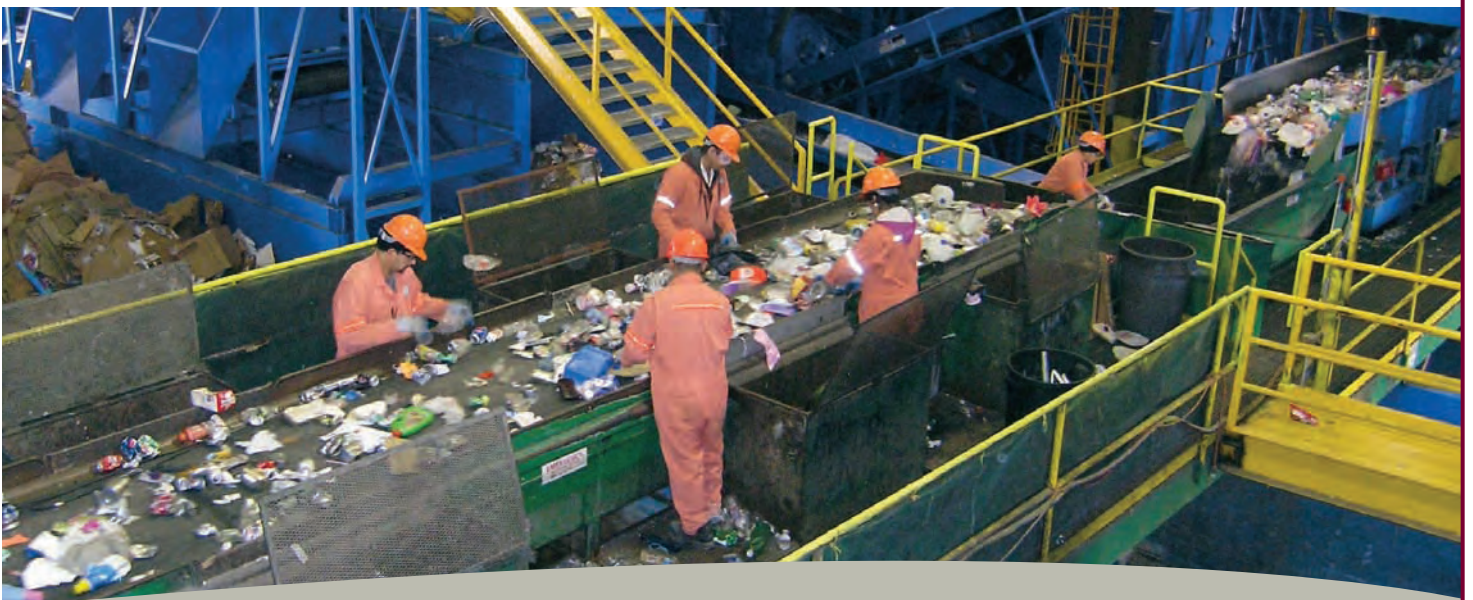


CLARK COUNTY REGIONAL SOLID WASTE PROGRAM 2010 ANNUAL REPORT



**SUSTAINABILITY & OUTREACH DIVISION
ENVIRONMENTAL SERVICES**

PROGRAM OVERVIEW

On January 1, 2010, the Board of Clark County Commissioners created the Department of Environmental Services. The county's regional Solid Waste Program is now a part of this new department, along with other programs such as Clean Water, Endangered Species, Environmental Permitting, Vegetation Management, and Legacy Lands. The Solid Waste Program is managed by the Sustainability and Outreach Division. Environmental Services' mission is to strategically protect and enhance our natural environment.

OUR RECYCLING SAVES:

- Approximately 366,395 metric tons of green house gases (CO₂ equivalent) annually
- An equivalent to removing 67,108 passenger cars from the roadway each year
- 890,000 trees annually by recycling paper
- 6 million kilowatt hours by recycling aluminum cans

MEASURING UP COUNTYWIDE

Annual recycling rate - **46%**
Annual recovery rate - **10%**
Total diversion rate **56%**

Waste sent to the landfill -
236,488 tons

Recycled through curbside residential collection
Recycling - **37,460 tons**
Yard debris - **26,919 tons**

Population served through residential curbside collection programs

Recycling - **133,689 households**
Yard debris - **47,616 households**

2010 ACCOMPLISHMENTS

Recycling Program

2010 was the first full year with our Big Blue carts: recyclables collected increased by 18.5 percent.

The West Vancouver recycling facility upgraded its processing equipment and can now sort mixed materials from the carts more efficiently.

During August, we inspected recycling carts in sample areas, looking for plastic bags and improperly placed glass bottles, and also for mistakes such as block foam, plastic trays, and frozen food boxes. Of the carts inspected, only 7 percent had glass; 24 percent had plastic bags. An "Oops!" tag was left when problems were noted; those tagged carts looked much better on the next collection day. "Your recycling looks great!" and "Thanks for recycling!" tags were left when all was done right.

Your New Best Friend

To go with the blue carts, the new recycling trucks were "decked out" with a graphic - "your new best friend makes recycling easier."



GREENBUILDING
Building For Our Future

New places, new faces

Look for us at the Vancouver Farmers Market on the last Saturday of each month. At our booth, staff will answer questions about all of our environmental programs.

Toolkit: Recycling resource directory

Over 300 copies of the Clark County Toolkit were distributed to assist the building industry as they work on projects. This directory describes resources for recycling construction waste, deconstruction, salvage, and green building. The Toolkit is available online at www.clark.wa.gov/recycle/disposal/demolition.html.



Volunteer Day at Pacific Park

In observance of the 9-11 Day of Service, 350 volunteers worked on planting our Natural Gardening Demonstration site at Pacific Community Park. People of all ages, from babies in backpacks to great-grandparents, worked for four hours with amazing results. Thousands of plants are now growing in the eight themed-garden plots; brick patios appeared; raised beds were built. Volunteer labor was valued at more than \$30,000.



2010 PROGRAMS FAST FACTS

- 2good2toss.com - 379 postings and 283 new members.
- 2.7 million pounds of household hazardous waste collected from over 125,000 residents, including:
 - Household batteries - 178,877 lbs.
 - Block foam - 16,670 lbs.
 - Electronic waste - 521,471 lbs.
 - Unwanted medications - 5,120 lbs.
 - Waste motor oil - 951,912 lbs.
 - Used paint - 836,400 lbs.
- Master Composter/Recyclers gave 2,011 volunteer hours of outreach to the public
- Student Environmental Leadership Forum (SELF) held at Clark College - 200 students attended
- Empower Up gave 2,311 volunteer hours and had 2,846 program participants
- Forty Home Grown Gardens were installed through the Department of Ecology Off Set Cycle Grant.
- Thirty-four Clark County schools are participating in the Washington Green Schools program.
- Save Organic Scrap (SOS) program collected 927 tons of food/paper waste from students in 89 schools.
- Recycled 86 tons of waste from 43 green building projects in the area.
- Salvaged 372 tons of waste from demolition projects.



2010 PROGRAMS HIGHLIGHTS

The Division conducted and participated in many outreach events and programs throughout the year including:

- Fourth Annual Recycled Arts Festival attended by 15,000.
- 12 collections events for household hazardous waste, electronics and block foam.
- 12 additional *First Saturday* block foam collections.
- 2 special collection events for cell phones, medications, and thermometers.

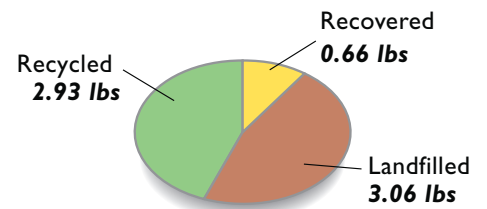


- 2 workshops on "All About Bats" and "Creatures of the Night."
- Harvest Fun Festival at the 78th Street Heritage Farm.
- Felida July 4th parade and activities.
- First Washington Green Schools Summit for Clark County.
- SOS program expanded in the Camas and Washougal School Districts.
- Classroom presentations, puppet shows, and assemblies held for 21,000 students and teachers.
- Assisted in the development and adoption of County Code for Sustainable Communities Pilot Program.

2010 AWARDS AND RECOGNITIONS

- Presented at the American Public Works Association Spring Conference on *How Local Governments Can Benefit From An ISO 14001 Environmental Management System*.
- Washington Green Schools received the Organizational Excellence Award from the Environmental Education Association of Washington.
- Assisted in Ecology's *Beyond the Curb* report.

HOW MUCH WASTE DO WE CREATE? (per person/per day)



6.65 lbs. total waste generated

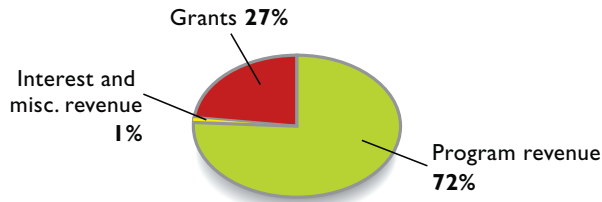
HOW DO GARBAGE AND RECYCLING RATES COMPARE?

Service	Region average	Clark County
Garbage tipping fees	\$101.46 per ton	\$80.96 per ton
Residential curbside garbage collection	\$17.72 per month	\$13.01 per month
Residential Curbside recycling collection	\$6.36 per month	\$4.15 per month

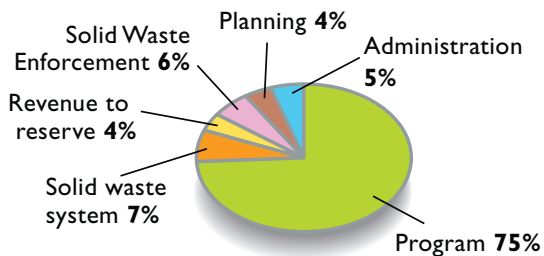


2010 ANNUAL FUNDING \$2,609,216

2010 REVENUE



2010 EXPENSES



PLANS FOR 2011 AND BEYOND

- Develop a master plan for the closed Lechner Landfill.
- Make capital improvements to the Central Transfer Station.
- Expand the food waste composting program.
- Partner for the construction of a Living Habitat House.
- Launch sustainable business practices and sustainable neighbors recognition program.
- Expand partnerships with neighborhoods, neighborhood associations and organizations.

SUSTAINABILITY AND OUTREACH DIVISION STAFF

Jo Anne Berg
Michael Davis
Pete DuBois
Sally Fisher
Rob Guttridge
Leslie Johnson
Anita Largent
Jim Mansfield
Bob A. Patterson
Erin Rowland
Cindy Stienbarger

WEBSITE

www.clark.wa.gov/environment

Online recycling directory

www.recyclingA-Z.com

Online materials exchange

www.2good2toss.com

Follow us on Facebook at

www.facebook.com/clarkcountyrecycles

CLARK COUNTY ENVIRONMENTAL SERVICES

1300 Franklin St., Room 185
PO Box 9810
Vancouver, WA 98666-9810

(360) 397-2121 ext. 4352

solidwaste@clark.wa.gov



For other formats

Clark County ADA Office, Voice (360) 397-2000
Relay 711 or (800) 833-6388, Fax (360) 397-6165,
E-mail ADA@clark.wa.gov

Printed on recycled paper.

