

# What you can do

Clark County Environmental Services wants to help you and your watershed neighbors protect stream health. Activities upstream affect our downstream neighbors, just as our upstream neighbors can affect us. Clark County has a collection of helpful information - from what you can do, to where you can find more information about your interests.

## Things you can do at home

There are many things that you can do at your home or business to improve stream health. Here are several ideas:

- **Natural gardening:** Avoid pesticides or fertilizers. Clark County Environmental Services can provide information about natural alternatives to try, such as introducing ladybugs to control certain insects. If you have stubborn yard or garden problems, try to limit chemical use to problem areas, and follow directions carefully. Remember pesticides and fertilizer can be harmful to children and pets.
- **Conserve water:** Let at least part of your lawn go dormant in summer if you can. If you need to water, try a deep watering once per week, or drip irrigate. You can make your own drip irrigation with an old hose, hammer and nails. Adjust sprinklers to keep water off of the driveway. Better yet, remove part of your lawn and plant native plants which require less water, can attract birds and butterflies, and provide habitat.
- **Don't pollute:** Keep oil and grease off the streets by maintaining vehicles free of leaks. Cover the street or driveway with newspapers or old towels before changing your vehicle's oil to absorb drips. Wash your vehicle at a car wash or on the lawn. Properly dispose of waste in the trash; not in storm drains or on the ground. Recycle used oil.

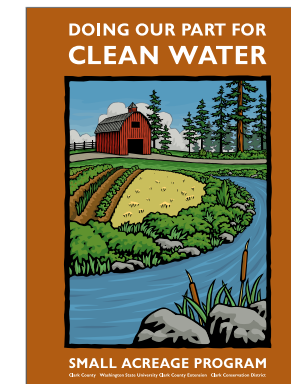


Clark County Environmental Services' tip sheets on what you can do to protect stream health

- **Maintain your septic system:** Septic systems can leak harmful bacteria and nutrients, which make algae grow in water. Have your system pumped and cleaned regularly and watch for signs of failure, such as excessively tall plants and puddles.
- **Leave streamside vegetation in place:** Maintain plants and trees with deep roots near the top of the stream bank to

prevent soil from eroding, keep runoff from entering the stream, and provide shade.

- **Learn how to better manage your rural property:** Attend a Small Acreage Program workshop or take the Living on the Land training: <http://clark.wsu.edu/horticulture/smallAcreageProgram.html>.



Yard sign recognizing landowners that manage their property to protect water

- **Pick up trash:** Most trash takes a very long time to break down, and can release pollutants such as chemicals and dyes. Trash that ends up in our streams can be carried to the ocean, where it accumulates in large patches. Trash also harms wildlife.
- **Make a call:** Let your elected officials know what you care about. Report water quality or erosion issues promptly to the Washington Department of Ecology

# What you can do

24-hour Surface Water Quality and Spill Complaint Line: (800) 258-5990.

- **Maintain your private stormwater facilities:** This may include underground structures or above-ground swales and ponds owned by your homeowner's association. Remove trash and weeds that clog drains, and trapped sediment and overgrown plants that decrease capacity to hold stormwater. Repair fences, gates and pipes if damaged. If your facility has a filter, make sure it is cleaned or replaced on schedule.
- **Disconnect:** Keep stormwater out of pipes that lead to streams. Divert gutters and downspouts into a rain barrel or to your yard.
- **"Doo something pawsitive":** Enroll your dog in Clark County's Canines for Clean Water program (the blue bandana shows you care!) at [www.CleanWaterDogs.com](http://www.CleanWaterDogs.com).



Accepting the Canines for Clean Water challenge



Replacing stormwater filters

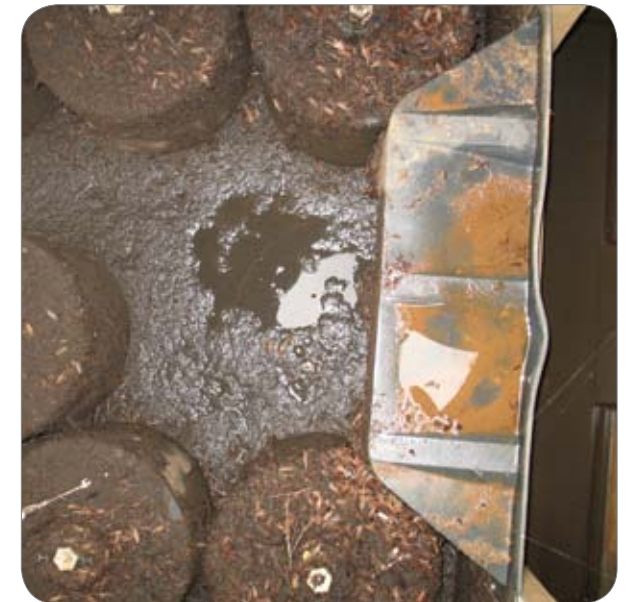


Rain barrel contest winner: Washougal High School

## Volunteer

Have a little more time? Volunteer to pull weeds or plant trees, monitor a creek, or learn how to help others protect stream health. The following local opportunities will allow you to learn, have fun with your family, and help your community:

- **Watershed Stewards**  
<http://clark.wsu.edu/volunteer/ws/index.html>
- **Master Gardeners**  
<http://clark.wsu.edu/volunteer/mg/index.html>
- **Master Composter Recycle**  
[www.clark.wa.gov/recycle/yard/MasterComposter.html](http://www.clark.wa.gov/recycle/yard/MasterComposter.html)
- **Clean Water Program Monitoring Resource Center**  
<http://www.clark.wa.gov/water-resources/monitoring/vol-resource-center.html>
- **Salmon Creek Watershed Council**  
<http://www.salmoncreekwatershed.org/events.html>
- **Clark Public Utilities Stream Team and Stream Stewards**  
<http://www.clarkpublicutilities.com/ourenvironment>
- **City of Camas Parks and Recreation**  
<http://www.ci.camas.wa.us/parks/parkvol.htm>
- **Vancouver - Clark Parks and Recreation**  
[http://www.cityofvancouver.us/parks-recreation/how\\_to\\_help/american.htm](http://www.cityofvancouver.us/parks-recreation/how_to_help/american.htm)
- **Vancouver Watersheds Council**  
<http://www.vancouverwatersheds.org/>
- **Friends of Ridgefield National Wildlife Refuge / Gee Creek Enhancement Committee**  
<http://www.ridgefieldfriends.org/index.php>  
<http://clark.wsu.edu/natural/geeCreek.html>
- **Friends of the East Fork Lewis River**  
<http://www.eastforklewisriver.org/>
- **Vancouver Lake Watershed Partnership**  
<http://www.cityofvancouver.us/PublicWorks/vancouverlake/>
- **Lower Columbia River Estuary Partnership**  
<http://www.lcrep.org/>



A sediment-filled stormwater vault

# What you can do

## General Resources

More resources to learn about things you can do include:

1. **WSU Clark County Extension**
  - **Events Calendar**  
<http://clark.wsu.edu/calendar/index.asp>
  - **Small Acreage Program Workshops and Training**  
<http://clark.wsu.edu/horticulture/smallAcreageProgram.html>
2. **Clark Conservation District**  
[www.clarkcd.org](http://www.clarkcd.org)
3. **Water Resources Education Center**  
<http://www.cityofvancouver.us/watercenter.asp>
4. **Columbia Springs Environmental Education Center**  
<http://www.columbiasprings.org/>
5. **Lower Columbia Fish Recovery Board**  
<http://www.lcfrb.gen.wa.us/default1.htm>
6. **Washington Wildlife and Recreation Coalition**  
[http://wildliferecreation.org/wwrp-projects/counties/Clark\\_county](http://wildliferecreation.org/wwrp-projects/counties/Clark_county)
7. **Regional Coalition for Clean Rivers and Streams**  
<http://www.cleanriversandstreams.org/>

## Partners in Resource Protection

